

# Heaven and Earth Designs

## Neptune's Horses

Chart No: HAEWC004

By Michele Sayetta

Artwork by Walter Crane



Finished Design Size 450W by 298H (18WX 11-7/8 H inches on 25ct fabric)

Heaven and Earth Designs

633 18th Ave SW

Rochester, MN 55902

507-280-8249

[www.heavenandearthdesigns.com](http://www.heavenandearthdesigns.com)

Copyright Heaven and Earth Designs 2004

## Instructions

The model for Neptune's Horses is stitched over 1 on 25ct, Linen or Evenweave may be used. You may use 1 or 2 strands of floss depending on your preference.

It is recommended that you make working copies and enlarge to view detail and symbols.

We also suggest using a #28 needle when working over 1 on 25ct.

This is a large project that will offer many hours of stitching pleasure.

We thank you for purchasing this design and welcome any questions or comments  
That you may have.

[Http://www.heavenandearthdesigns.com](http://www.heavenandearthdesigns.com)

**Pattern Name:** Neptune's Horses - Walter Crane

**Designed By:** Michele Sayetta

**Company:** Heaven and Earth Designs

**Copyright:** 2004



















**Fabric:** Linen or Evenweave 25, White

450w X 298h Stitches

**Size:** 25 Count, 18w X 11-7/8h in

### Floss Used for Full Stitches:

Symbol	Strands	Type	Number	Color
■ ●	2	DMC	154	Grape-VYDK
■ ◆	2	DMC	159	Gray Blue-LT
■ ⊙	2	DMC	169	Pewter-LT
■ ✕	2	DMC	318	Steel Gray-LT
■ 0	2	DMC	370	Mustard-MD
■ 9	2	DMC	400	Mahogany-DK
■ III	2	DMC	413	Pewter Gray-DK
■ L	2	DMC	414	Steel Gray-DK
■ =	2	DMC	434	Brown-LT
■ ☒	2	DMC	452	Shell Gray-MD
■ ↑	2	DMC	501	Blue Green-DK
■ ▪	2	DMC	522	Fern Green
■ -	2	DMC	524	Fern Green-VYLT
■ 2	2	DMC	611	Drab Brown
■ 1	2	DMC	612	Drab Brown-LT
■ √	2	DMC	640	Beige Gray-VYDK
■ †	2	DMC	645	Beaver Gray-VYDK
■ H	2	DMC	647	Beaver Gray-MD
■ ⊕	2	DMC	648	Beaver Gray-LT
■ 5	2	DMC	676	Old Gold-LT
■ ♦♦	2	DMC	778	Antique Mauve-VYLT
■ ✦	2	DMC	779	Cocoa-DK
■ 4	2	DMC	783	Topaz-MD
■ \$	2	DMC	799	Delft Blue-MD
■ )	2	DMC	823	Navy Blue-DK
■ @	2	DMC	844	Beaver Brown-ULDK
■ 7	2	DMC	921	Copper
■ /	2	DMC	934	Black Avocado Green
■ >	2	DMC	938	Coffee Brown-ULDK
■ ∞	2	DMC	948	Peach-VYLT
■ :	2	DMC	950	Desert Sand-LT
■ ↓	2	DMC	3022	Brown Gray-MD

Symbol	Strands	Type	Number	Color
	2	DMC	3064	Desert Sand
	2	DMC	3371	Black Brown
	2	DMC	3752	Antique Blue-VYLT
	2	DMC	3768	Gray Green-DK
	2	DMC	3776	Mahogany-LT
	2	DMC	3781	Mocha Brown-DK
	2	DMC	3787	Brown Gray-DK
	2	DMC	3790	Beige Gray-ULDK
	2	DMC	3799	Pewter Gray-VYDK
	2	DMC	3828	Hazelnut Brown
	2	DMC	3829	Old Gold-VYDK
	2	DMC	3836	Grape-LT
	2	DMC	3861	Cocoa-LT
	2	DMC	3864	Mocha Beige-LT
	2	KBF	006	Blue
	2	KBF	033	Royal Blue
	2	KBF	006HL	Blue Hi Lustre
	2	KBF	051HL	Sapphire Hi Lustre

[illegible]

	80	90	100	110	120	130	140	150
10	...	...	...	...	...	...	...	...
20	...	...	...	...	...	...	...	...
30	...	...	...	...	...	...	...	...
40	...	...	...	...	...	...	...	...
50	...	...	...	...	...	...	...	...
60	...	...	...	...	...	...	...	...
70	...	...	...	...	...	...	...	...
80	...	...	...	...	...	...	...	...
90	...	...	...	...	...	...	...	...

	160	170	180	190	200	210	220	230
10	...	...	...	...	...	...	...	...
20	...	...	...	...	...	...	...	...
30	...	...	...	...	...	...	...	...
40	...	...	...	...	...	...	...	...
50	...	...	...	...	...	...	...	...
60	...	...	...	...	...	...	...	...
70	...	...	...	...	...	...	...	...
80	...	...	...	...	...	...	...	...
90	...	...	...	...	...	...	...	...

	240	250	260	270	280	290	300	310
10	...	...	...	...	...	...	...	...
20	...	...	...	...	...	...	...	...
30	...	...	...	...	...	...	...	...
40	...	...	...	...	...	...	...	...
50	...	...	...	...	...	...	...	...
60	...	...	...	...	...	...	...	...
70	...	...	...	...	...	...	...	...
80	...	...	...	...	...	...	...	...
90	...	...	...	...	...	...	...	...



	310	320	330	340	350	360	370	380
10	...	...	...	...	...	...	...	...
20	...	...	...	...	...	...	...	...
30	...	...	...	...	...	...	...	...
40	...	...	...	...	...	...	...	...
50	...	...	...	...	...	...	...	...
60	...	...	...	...	...	...	...	...
70	...	...	...	...	...	...	...	...
80	...	...	...	...	...	...	...	...
90	...	...	...	...	...	...	...	...

	390	400	410	420	430	440	450
10	...	...	...	...	...	...	...
20	...	...	...	...	...	...	...
30	...	...	...	...	...	...	...
40	...	...	...	...	...	...	...
50	...	...	...	...	...	...	...
60	...	...	...	...	...	...	...
70	...	...	...	...	...	...	...
80	...	...	...	...	...	...	...
90	...	...	...	...	...	...	...

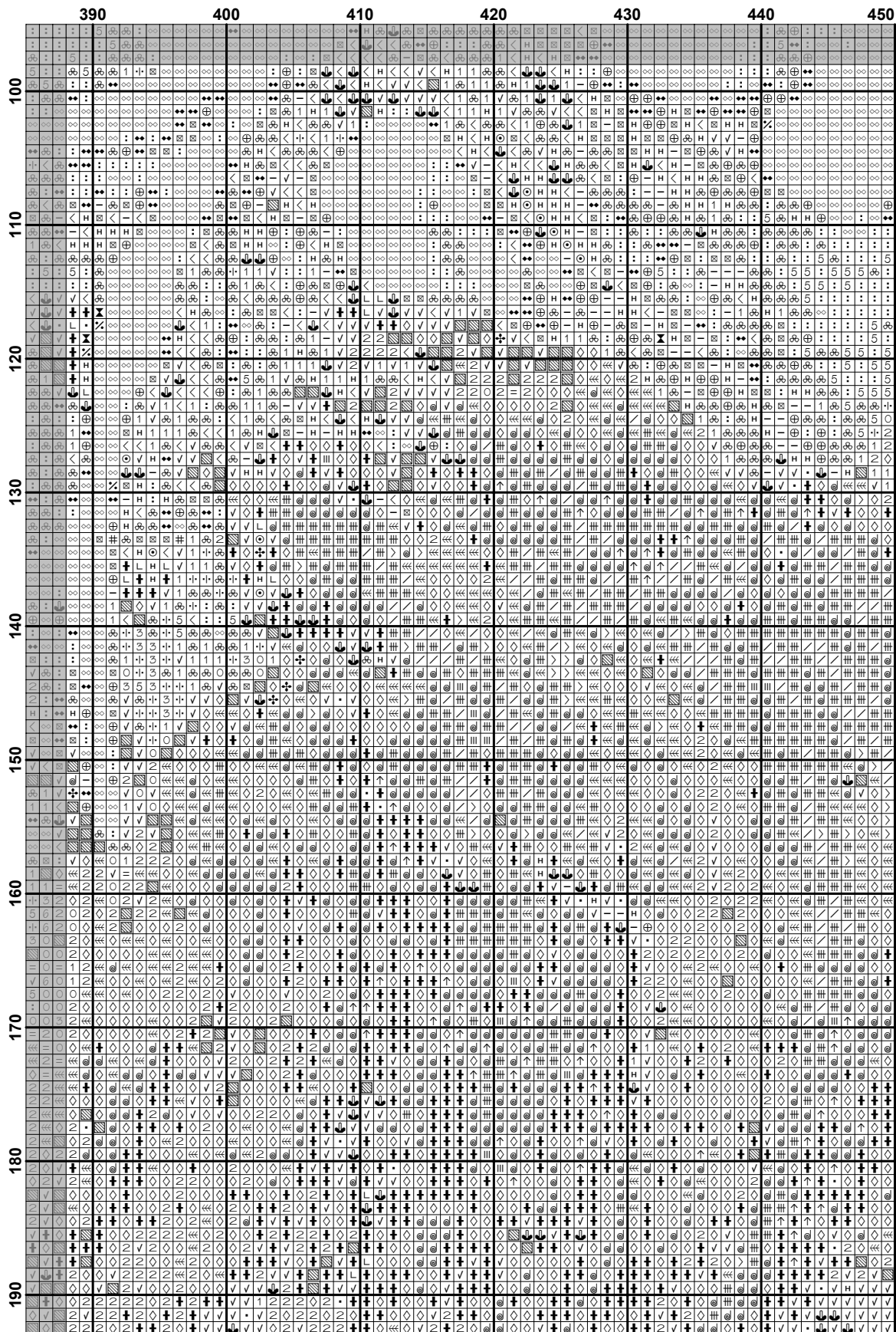
[illegible]

	80	90	100	110	120	130	140	150
100								
110								
120								
130								
140								
150								
160								
170								
180								
190								

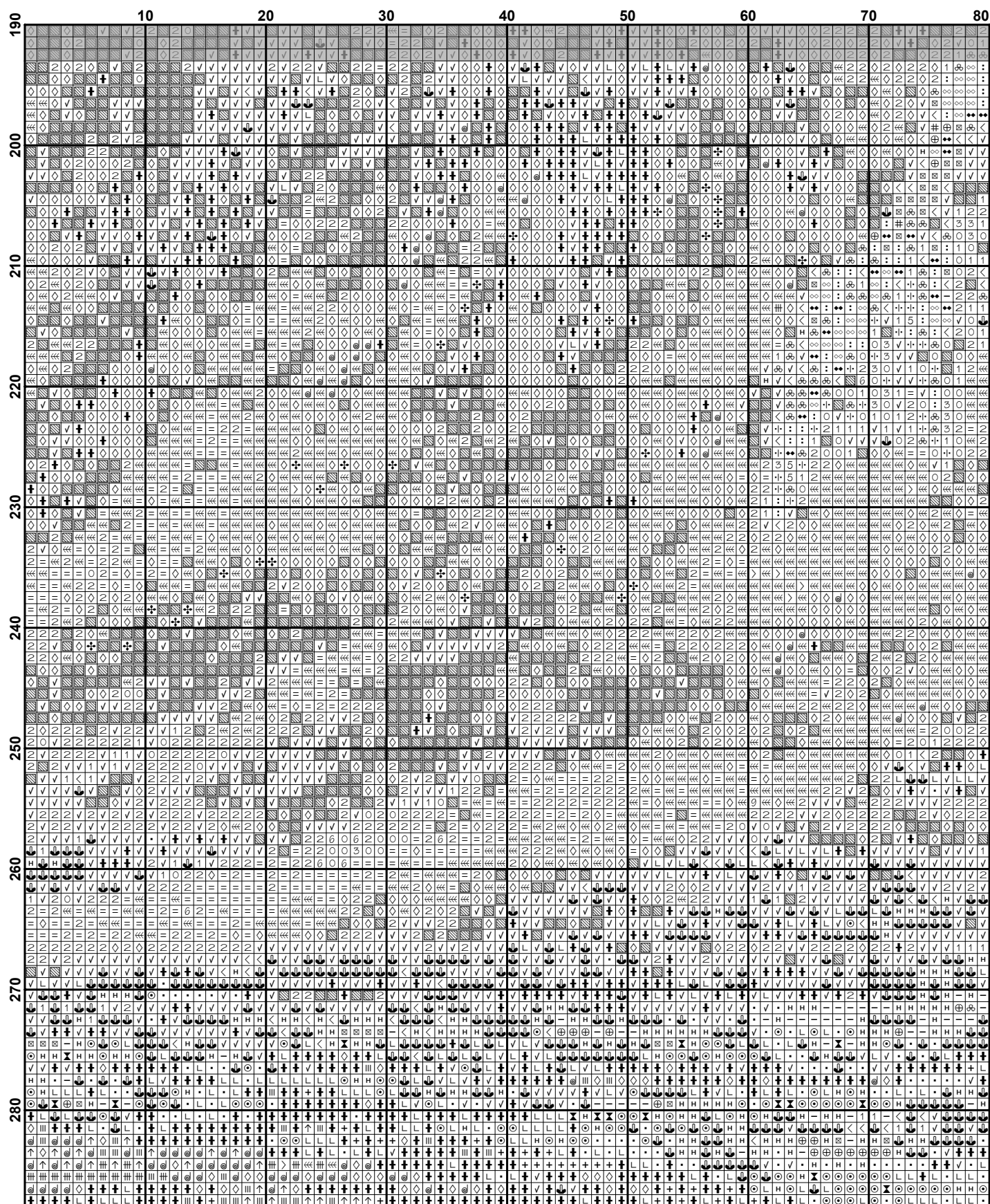
[illegible]

	240	250	260	270	280	290	300	310
100								
110								
120								
130								
140								
150								
160								
170								
180								
190								

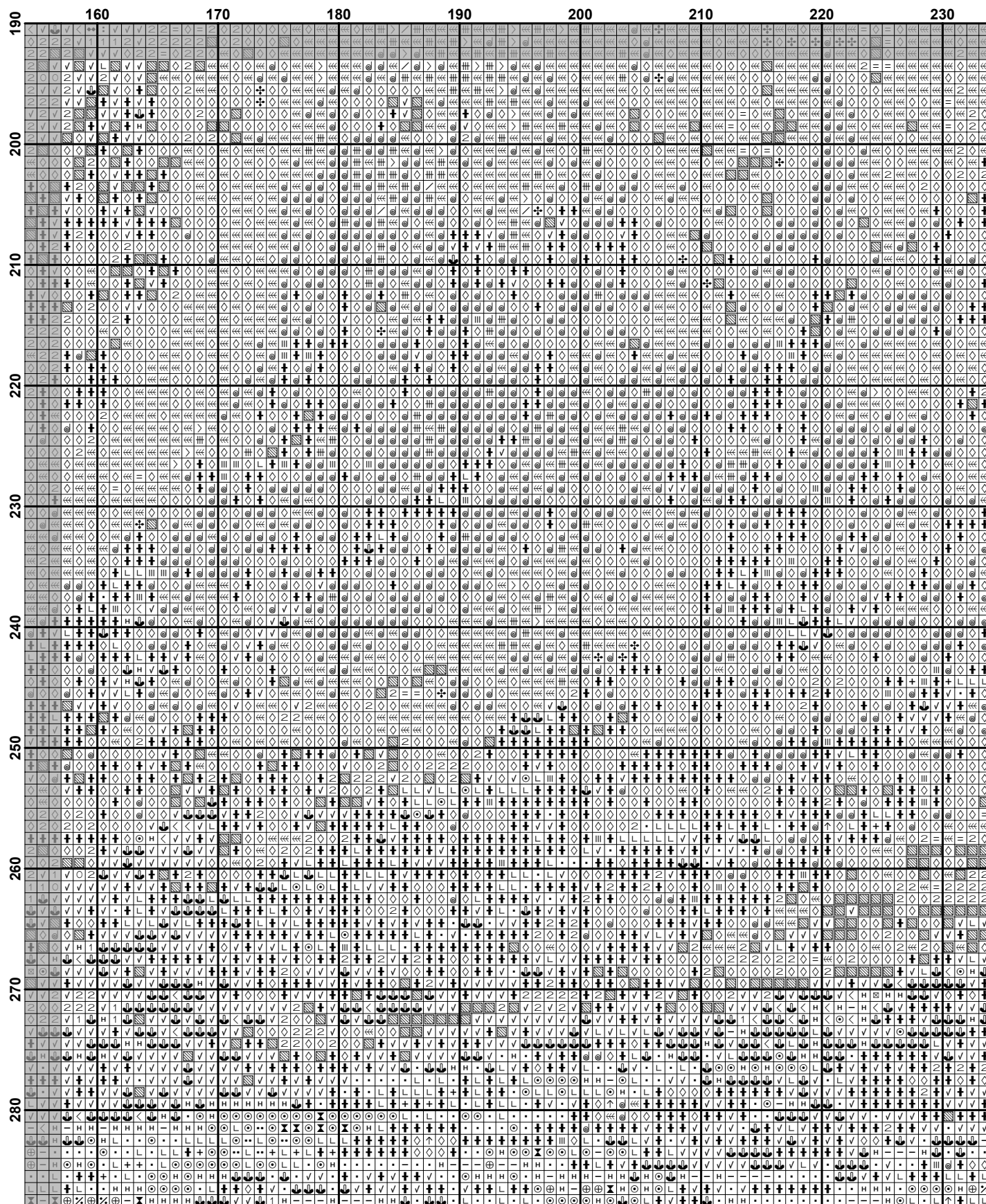
	310	320	330	340	350	360	370	380
100	100	100	100	100	100	100	100	100
110	110	110	110	110	110	110	110	110
120	120	120	120	120	120	120	120	120
130	130	130	130	130	130	130	130	130
140	140	140	140	140	140	140	140	140
150	150	150	150	150	150	150	150	150
160	160	160	160	160	160	160	160	160
170	170	170	170	170	170	170	170	170
180	180	180	180	180	180	180	180	180
190	190	190	190	190	190	190	190	190





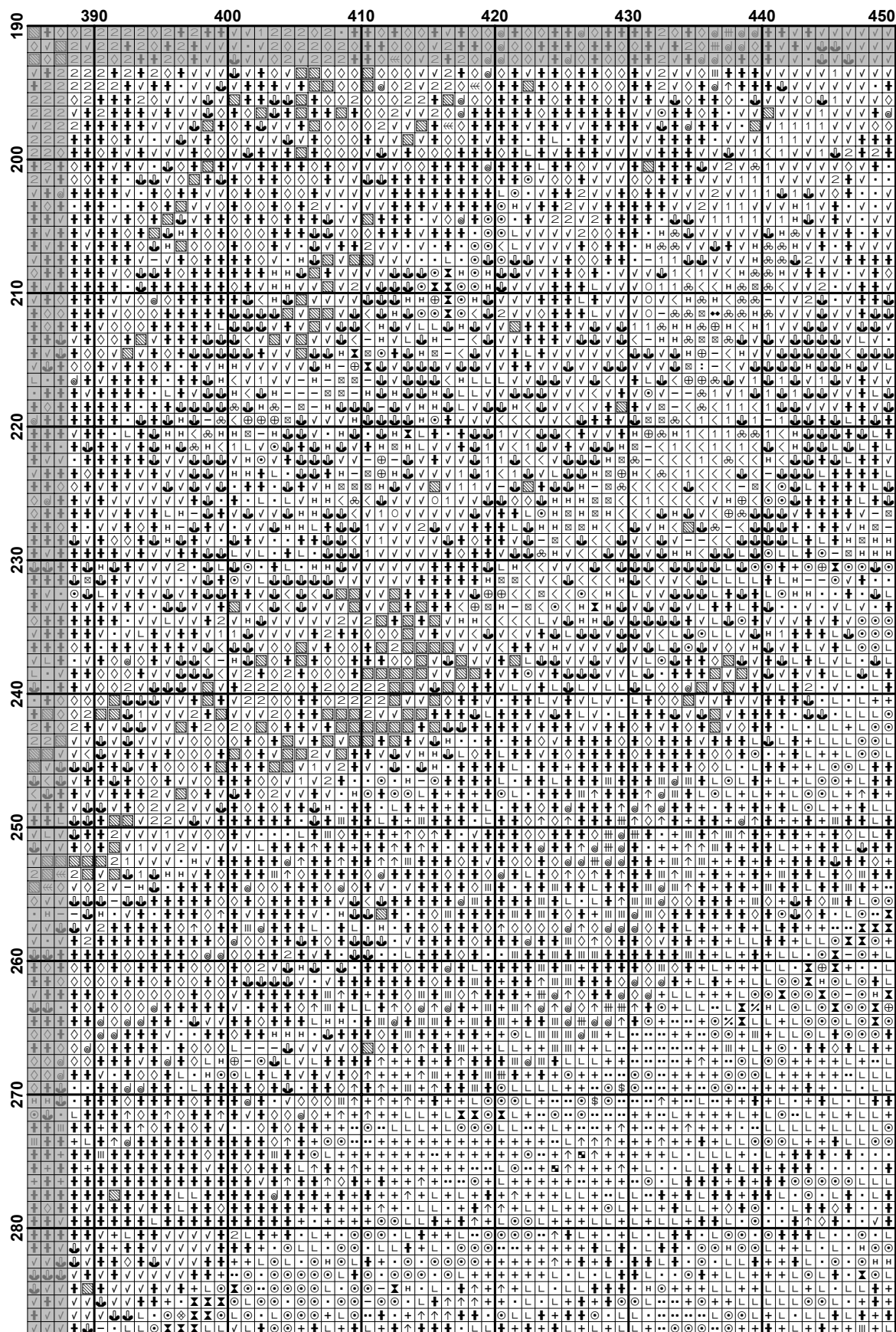


	80	90	100	110	120	130	140	150
190								
200								
210								
220								
230								
240								
250								
260								
270								
280								



	240	250	260	270	280	290	300	310
190								
200								
210								
220								
230								
240								
250								
260								
270								
280								

	310	320	330	340	350	360	370	380
190								
200								
210								
220								
230								
240								
250								
260								
270								
280								



[illegible]

[illegible]



[illegible]



[illegible]

[illegible]